



Premium Spam Filtering Service

Are you tired of constantly sifting through the amount of spam email in your inbox? Wish you could stop spam before it even gets to your computer?

NATCO's premium spam filtering service is just what you need to stop spam in its tracks, for only \$1.99 per month.

Benefits of Spam Filtering

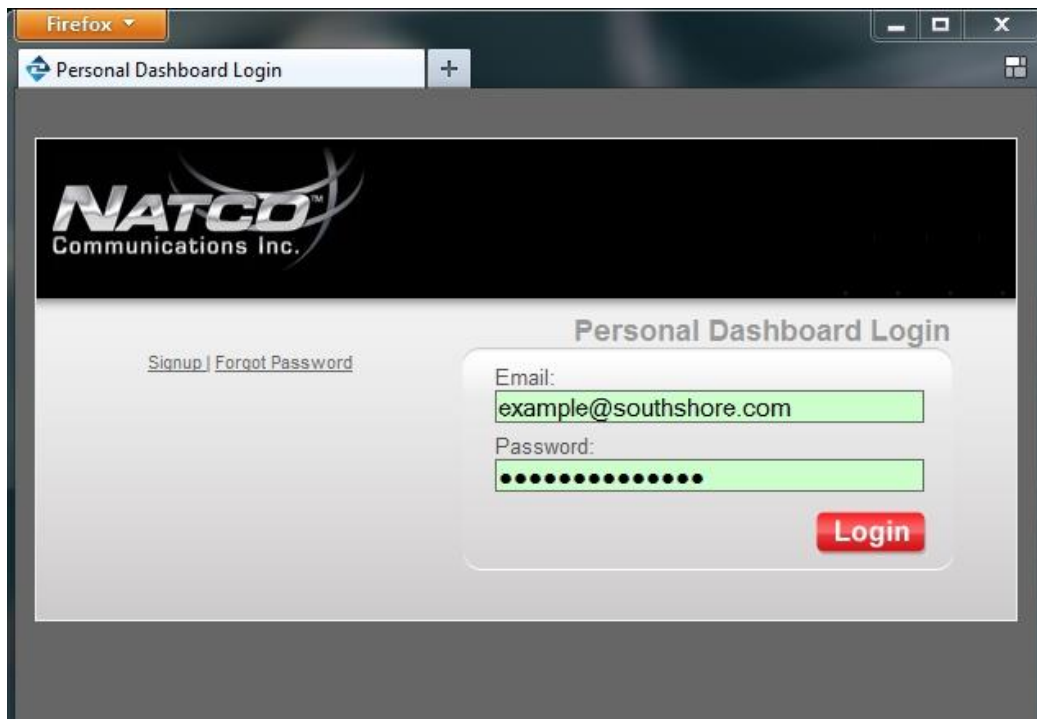
- **Virus Filtering:** Let us filter your email for viruses so you know that your attachments are safe to open.
- **Spam Free Inbox:** The amount of spam in your inbox can almost be eliminated giving you more time to respond to those important messages.
- **Daily or Weekly Reports:** You get daily reports of what messages have been filtered in an email, and from that email you can quickly release those messages into your inbox.
- **Friends and Enemies Lists:** In your options you can setup a "friends list" that never gets filtered/blocked and an "enemies lists" that always gets filtered/blocked. This helps you stop email from people or companies that just won't stop sending them to you.

Things you should know

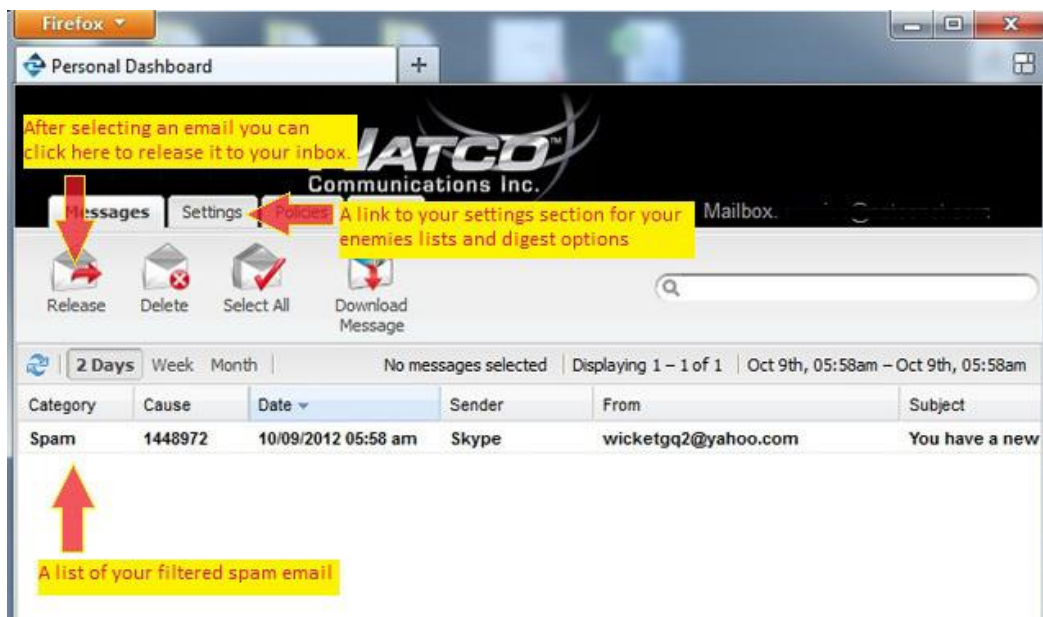
Dashboard Access: To login to the [dashboard](#) you use your full email address (e.g. example@southshore.com) and the associated password for that email access.

NOTE: you can access the dashboard from a link in your digest email or through the website: <http://mailfilter.natcotech.com>

This is the login screen for the dashboard

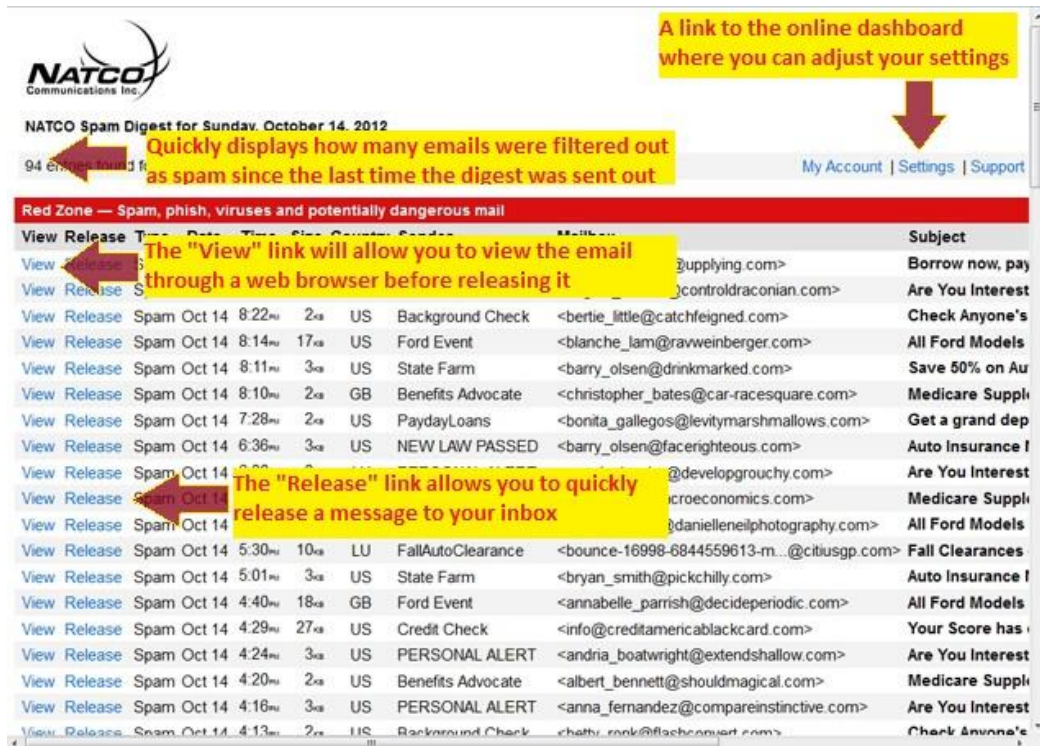


This is what the "Personal Dashboard" looks like when you login



NATCO Spam Digest Report: The spam digest is sent out daily to your email by default; however it can be configured to be turned off, or to be sent out weekly. Below is what the digest will look like. From this email you will have the ability to view a filtered spam email or quickly release it to your inbox if you choose. You will also be able to access your dashboard settings from a link within the email.

Below is an example of what the NATCO Spam Digest will look like in your email



Friends/Enemies List: The friends list and enemies list is located under the "Policies" section of your online dashboard. Any email address that is listed in the friends list will never go through the spam filtering process and will always be delivered to your inbox. Any email address that is listed in the enemies list will always be blocked by the spam filtering service and will not reach your inbox.

NOTE: Once you make a change, the setting is automatically saved. There is no save or apply button.

Below is a look at the Dashboard Policies tab, where you will find the friends/enemies lists

The screenshot shows the NATCO Communications Inc. mailfilter console in a Firefox browser window. The address bar shows `mailfilter.natcotech.com/console/`. The page has a navigation bar with tabs for Messages, Settings, Policies (selected), and Status. Below the navigation bar, there's a section titled "Filter by Message Type" with three zones: Red Zone - Potentially dangerous mail, Yellow Zone - Suspicious mail, and Green Zone - Junk mail. Below this is the "Filter by Sender" section, which contains two sub-sections: "Friends" and "Enemies". Each sub-section has a text input field, a green plus icon, and a "Sender" label. A red arrow points to the plus icon in the Friends section, and another red arrow points to the plus icon in the Enemies section. Yellow callout boxes provide instructions: "Friends list: enter the email address that you never want to be filtered and press the 'plus' symbol." and "Enemies list: enter the email address that you always want to be blocked and press the 'plus' symbol." Below the input fields, there are messages from the administrator: "Your administrator has set up a [Friends](#) list for 'natconet.com'." and "Your administrator has set up an [Enemies](#) list for 'natconet.com'."

Firefox

mailfilter.natcotech.com/console/

Personal Dashboard

NATCO
Communications Inc.

Messages Settings Policies Status About Help Logout Mailbox: natconet.com

Filter by Message Type
Control how intercepted messages are processed.

- ☒ Red Zone - Potentially dangerous mail
- ☒ Yellow Zone - Suspicious mail
- ☒ Green Zone - Junk mail

Filter by Sender

Friends

Sender

Your administrator has set up a [Friends](#) list for 'natconet.com'.

Enemies

Sender

Your administrator has set up an [Enemies](#) list for 'natconet.com'.

Friends list: enter the email address that you never want to be filtered and press the "plus" symbol.

Enemies list: enter the email address that you always want to be blocked and press the "plus" symbol.